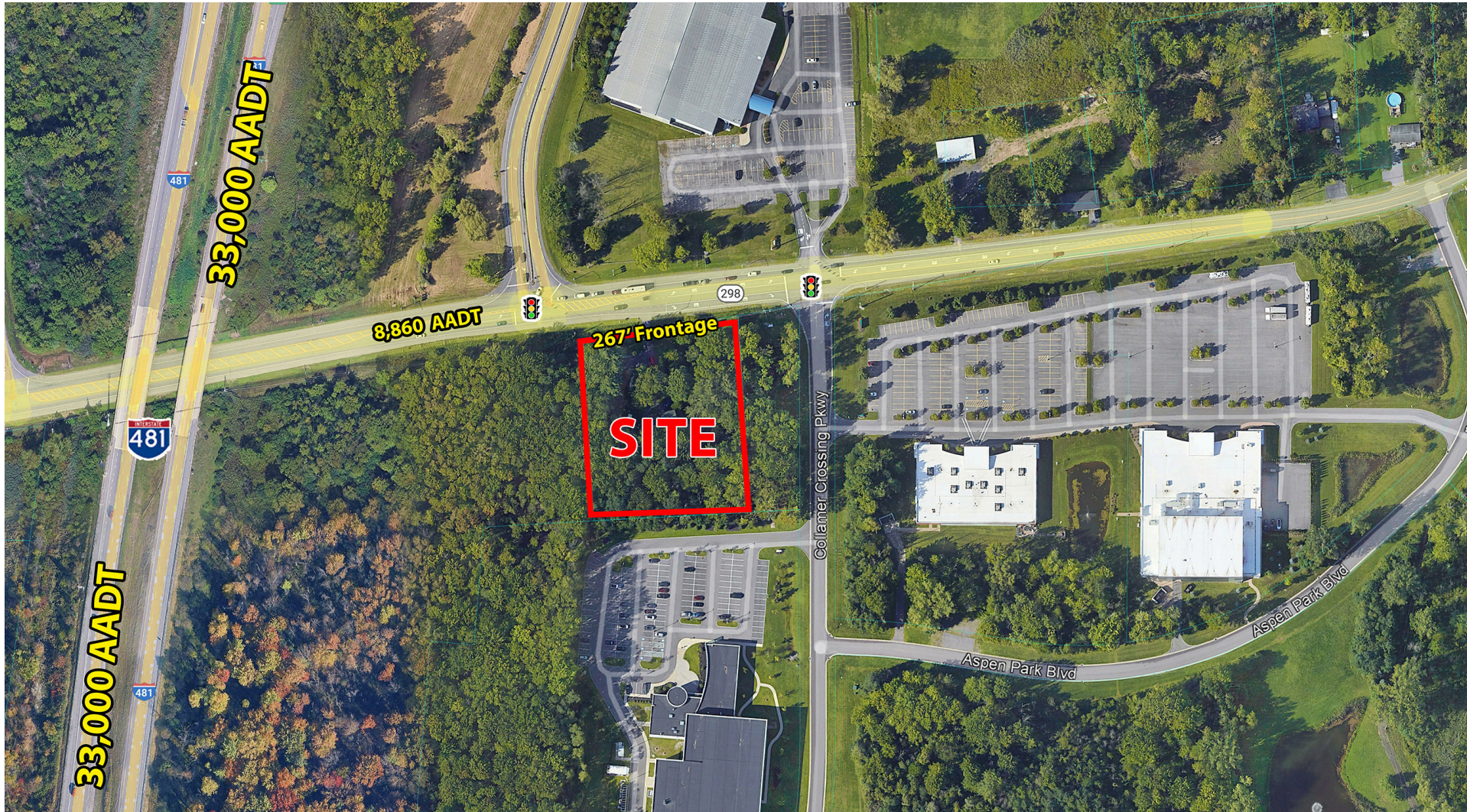


FOR GROUND LEASE



6826 COLLAMER RD. EAST SYRACUSE, NY 13057

6826 COLLAMER RD.

HIGHLIGHTS

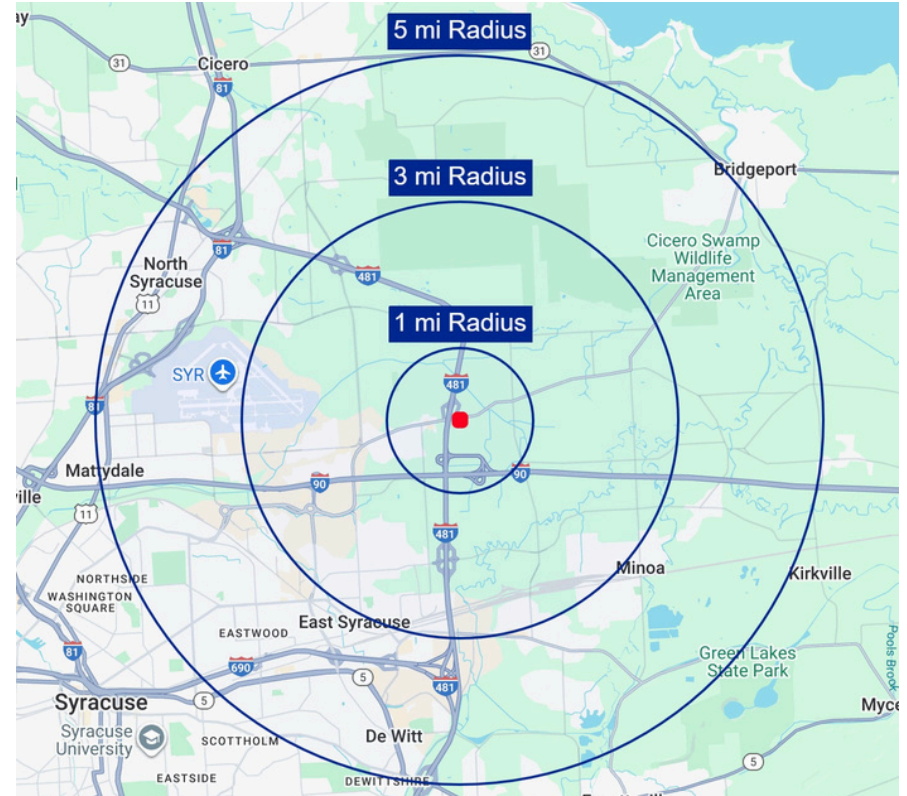
- 267' frontage on a Collamer Rd
- 1.96 acres Vacant Land
- High Visibility Strong Highway access
- Directly off of Exit 7 of Interstate 481 (AADT 33,000)
- **14 Miles from \$100 Billion Micron Semiconductor Manufacturing Campus.**
- **10 miles from the Lincoln Center.**

OFFERING INFO

Parcel Size:	1.96 Acres
Zoning:	Hi-Tech Special Zoning
Rent:	Call for details
Nets:	Call for details

DEMOGRAPHICS

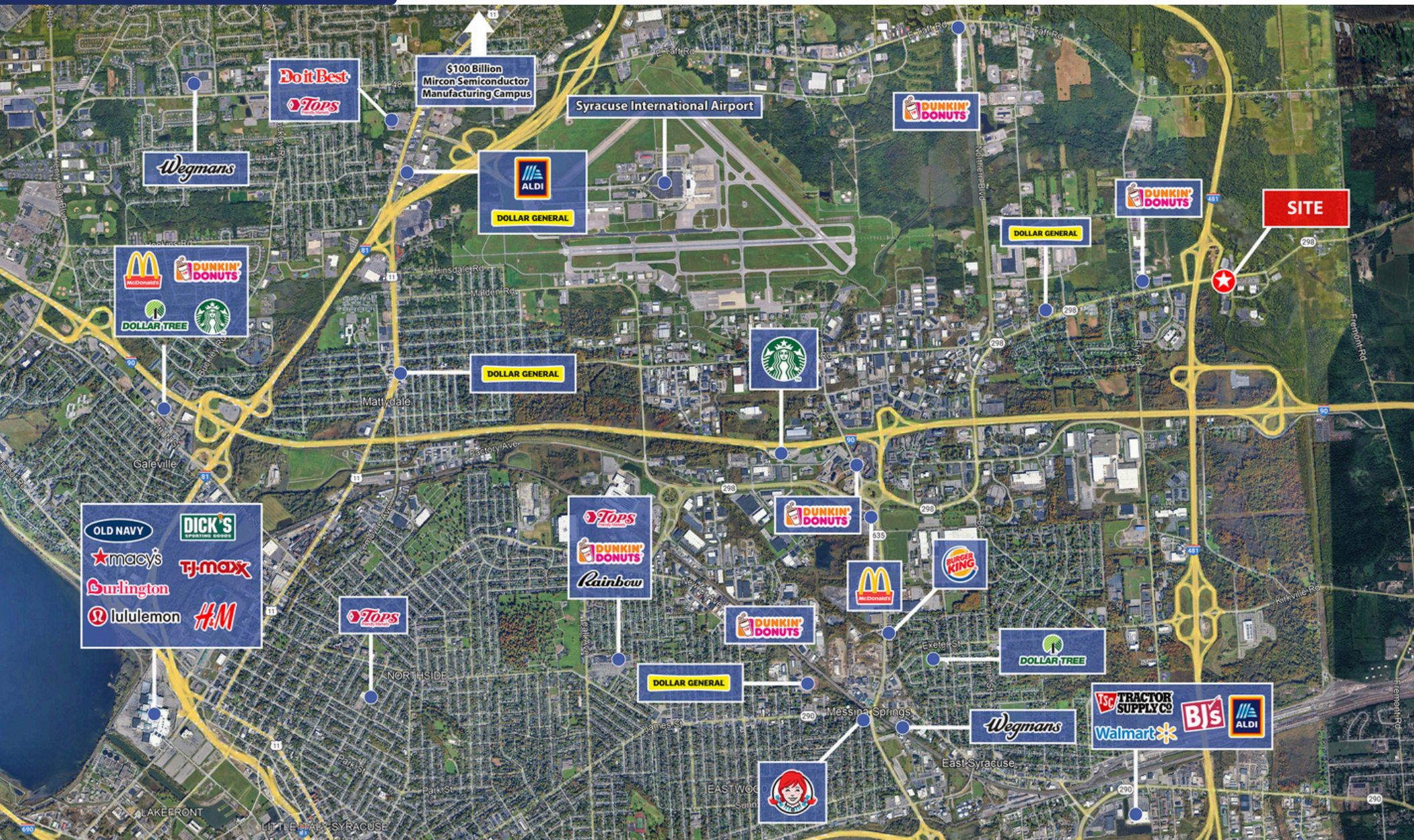
	1 Mile	3 Miles	5 Miles
POPULATION:	624	11,539	74,971
HOUSEHOLDS	246	5,136	33,002
AVERAGE HH INCOME	\$157,679	\$99,719	\$96,313
DAYTIME POPULATION	1,462	18,076	75,547
BUSINESS ESTABLISHMENTS	104	1,246	4,075



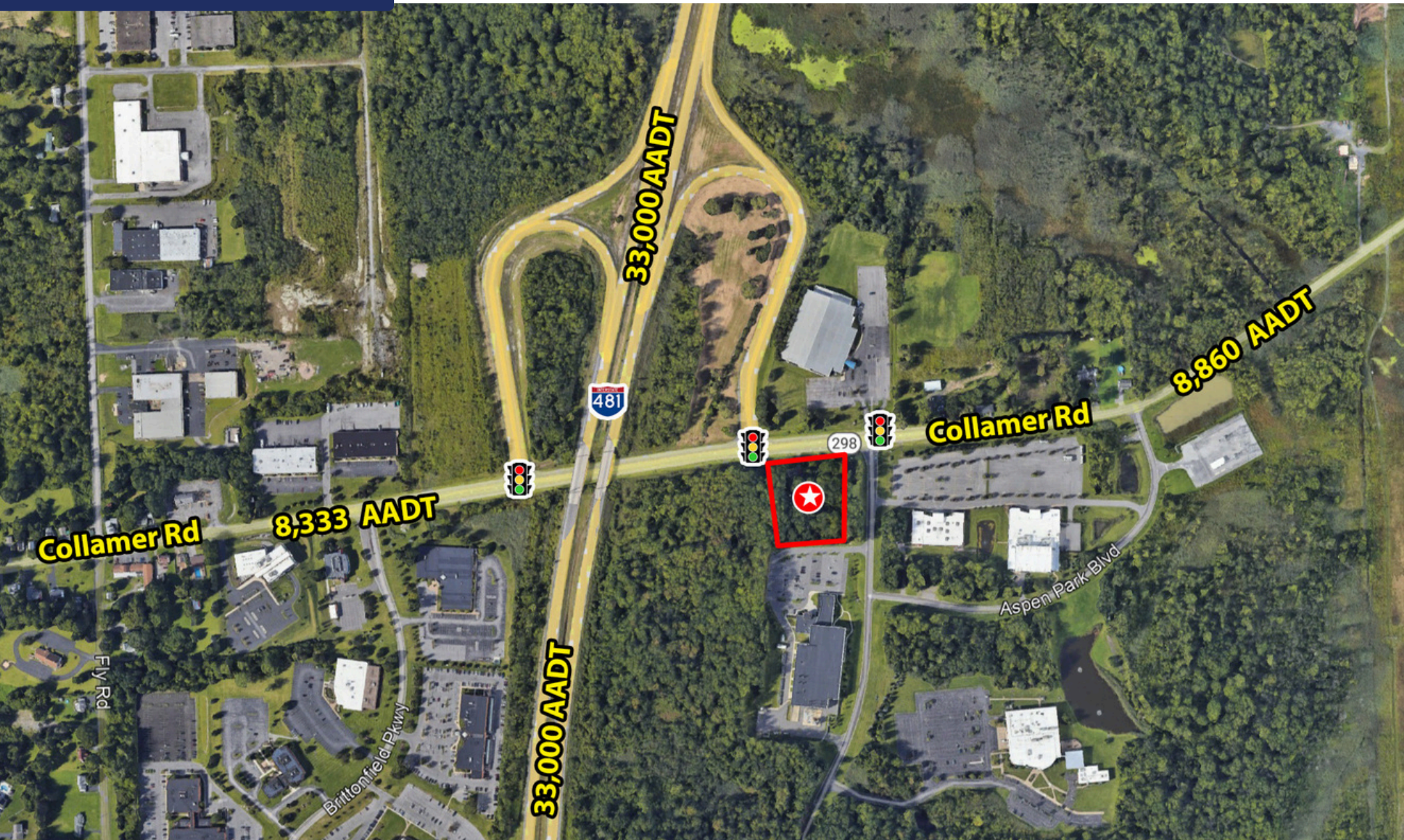
Area Amenities :



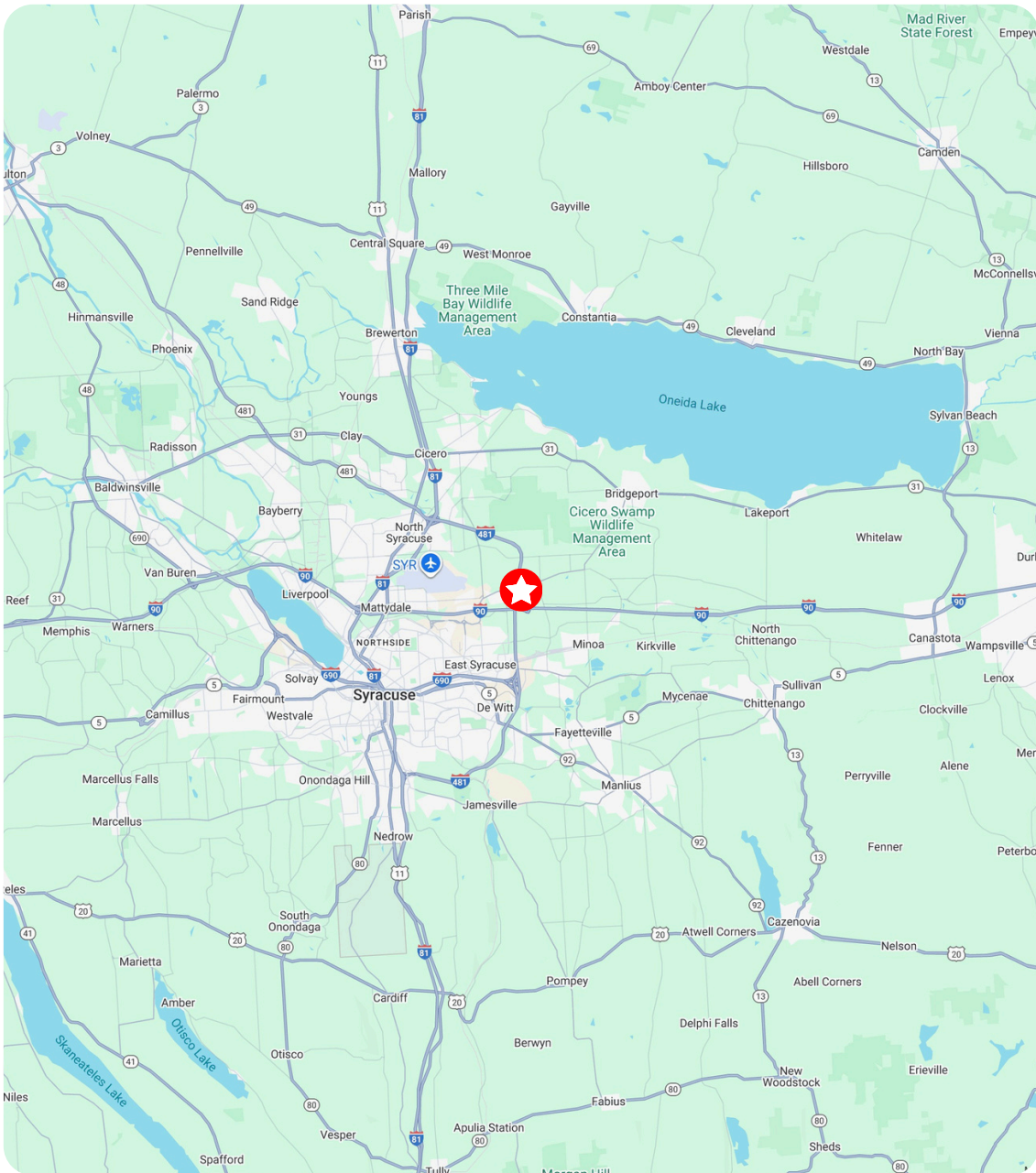
HIGH AERIAL



LOW AERIAL



6826 COLLAMER RD. EAST SYRACUSE, NY 13057



For all real estate inquiries please
contact exclusive brokers:

Chris Jones

518.365.9434

cjones@trgcos.com



Trinity Realty Group
18 Computer Drive East, Ste 201
Albany, NY 12205
518.458.7203
trgcos.com

The information contained herein has been obtained from sources deemed reliable. However we do not make any guarantees, warranties, or representation as to the completeness and accuracy thereof.